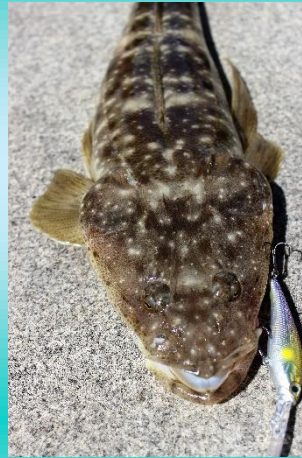


Trolling Lures for Flathead



A Beginner-Friendly Guide to Catching More Fish

By Fish Flickers

Flathead lure fishing at sunrise

Why Trolling for Flathead is So Addictive

Trolling for flathead is one of the easiest and most enjoyable styles of fishing you can learn. It's a method I've personally loved for over 10 years, and once you hook your first quality flathead on light gear, you'll understand why.

The great thing about trolling lures for flathead is that it doesn't require expensive equipment or complicated techniques. With the right setup, the correct lure, and a little patience, you can consistently catch fish in shallow water.

One thing I often hear from anglers is:

“I can't catch fish on lures.”

The first two questions I ask are:

1. What pound line are you using?
2. What pound leader are you using?

The answer usually explains everything.

Line and Leader Selection

Line choice is extremely important when trolling lures for flathead. The thickness and type of line can dramatically affect how a lure swims and how deep it dives.

For best results, I use the thinnest 6lb braid I can find. My personal favourite is the Berkley Nano Line because of its fine diameter and sensitivity.

Recommended Setup

- **Main Line:** 6lb braid
- **Leader:** 8lb–10lb fluorocarbon
- **Leader Length:** 600mm–800mm

Keeping the leader shorter helps maintain better lure action and depth control.

A good mate of mine landed his personal best flathead — a cracking 68cm fish — on 6lb Nano braid with an 8lb leader around 500mm long. On light gear, flathead fishing becomes incredibly fun.

I previously used 4lb braid, but after fishing multiple Flathead Classics, I found slightly heavier line gives a better balance between strength and lure performance.

While some anglers prefer heavier gear for targeting the really big females, this setup is ideal for shallow-water trolling.

Fishing braid and fluorocarbon leader setup

Choosing the Right Lure

There's an old saying:

“More lures catch fishermen and fisherwomen than catch fish.”

It's true.

Even now, I still buy lures that look incredible in the tackle shop, only to discover their underwater action isn't great.

That's why I stick with proven lures that consistently catch fish.

Proven Flathead Trolling Lures

Zerek Tango Shad

The Tango Shad has become one of my absolute favourites. During one Flathead Classic, this lure accounted for over 100 fish across the three-day event.

Zerek Bulldog

The Bulldog offers a different swimming action and dives at a slightly different depth compared to the Tango Shad. Having both allows you to adapt to changing conditions.

Halco Lures

Halco hardbodies have been proven fish catchers for years and remain a reliable option for flathead trolling.

Berserk Australia Loco 60

The Loco 60 is another great lure that dives deeper, reaching around 2m–2.5m.

When trolling, you want the lure tapping the bottom occasionally without ploughing through the sand.

Selection of hardbody flathead lures

Lure Colour Matters

Choosing the right colour can make a huge difference.

A simple rule of thumb is:

- **Dark lure = dark day**
- **Light lure = light day**

The same applies to water clarity:

- Dirty water = darker lure
- Clear water = lighter lure

One exception for me has been the green Zerek lure — it seems to work well in almost all conditions.

The key is experimenting and learning what colours perform best in your local waterways.

Trolling Techniques and Boat Speed

When it comes to trolling flathead, I generally find more success trolling *with* the tide.

My previous setup was a 50hp Yamaha four-stroke tilt steer. The throttle buttons on the tiller allow me to fine-tune the speed perfectly so I can troll as slowly as possible while still keeping the lure working.

That's important because the longer your lure stays in the strike zone, the better your chances of getting hit.

How to Know Your Lure is Working

Your rod tip will tell you everything.

If the rod tip is vibrating steadily, the lure is swimming correctly.

If the vibration suddenly stops, chances are:

- Weed is fouling the lure
- The lure has picked up debris
- The lure has stopped swimming properly

When that happens, wind it in and clean it immediately.

Flathead caught on hardbody lure in shallow water

How Far Behind the Boat?

One mistake many anglers make is trolling their lure too far behind the boat.

I actually prefer trolling lures only around:

- **4m to 10m behind the boat**

With the motor puffing up sand, flathead often become curious and move in to investigate.

Then suddenly:

Bang — fish on!

Some of my best fish have been caught only 4 metres behind the boat in water as shallow as 400mm.

Rod and Reel Choices

There's endless debate about the best rod and reel combinations.

The truth is simple:

Buy the best gear you can comfortably afford.

You don't need ultra-expensive equipment to catch flathead consistently. A quality light spin outfit matched with the right line and lure setup will do the job perfectly.

Final Tips for Success

If you're just getting started trolling lures for flathead, focus on these basics:

- Use light braid and light leader
- Troll slowly
- Keep your lure working close to the bottom
- Match lure colours to the conditions
- Watch your rod tip constantly
- Don't troll too far behind the boat

Most importantly, spend time on the water experimenting.

Flathead fishing with lures is incredibly rewarding, and once you gain confidence, it quickly becomes addictive.

Good luck on the water — and tight lines!

Quick Setup Summary

Item	Recommendation
Main Line	6lb braid
Leader	8lb–10lb fluorocarbon
Leader Length	600mm–800mm
Lure Distance	4m–10m behind boat
Best Depth	0.4m–2.5m
Technique	Slow trolling with tide

For more tips and tricks visit [Fish Flickers](#) | [Savvybop](#)

